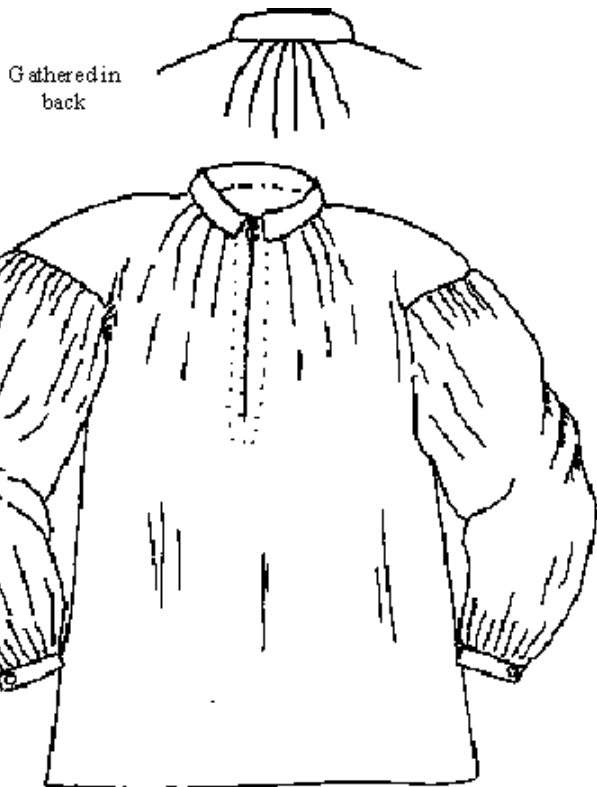
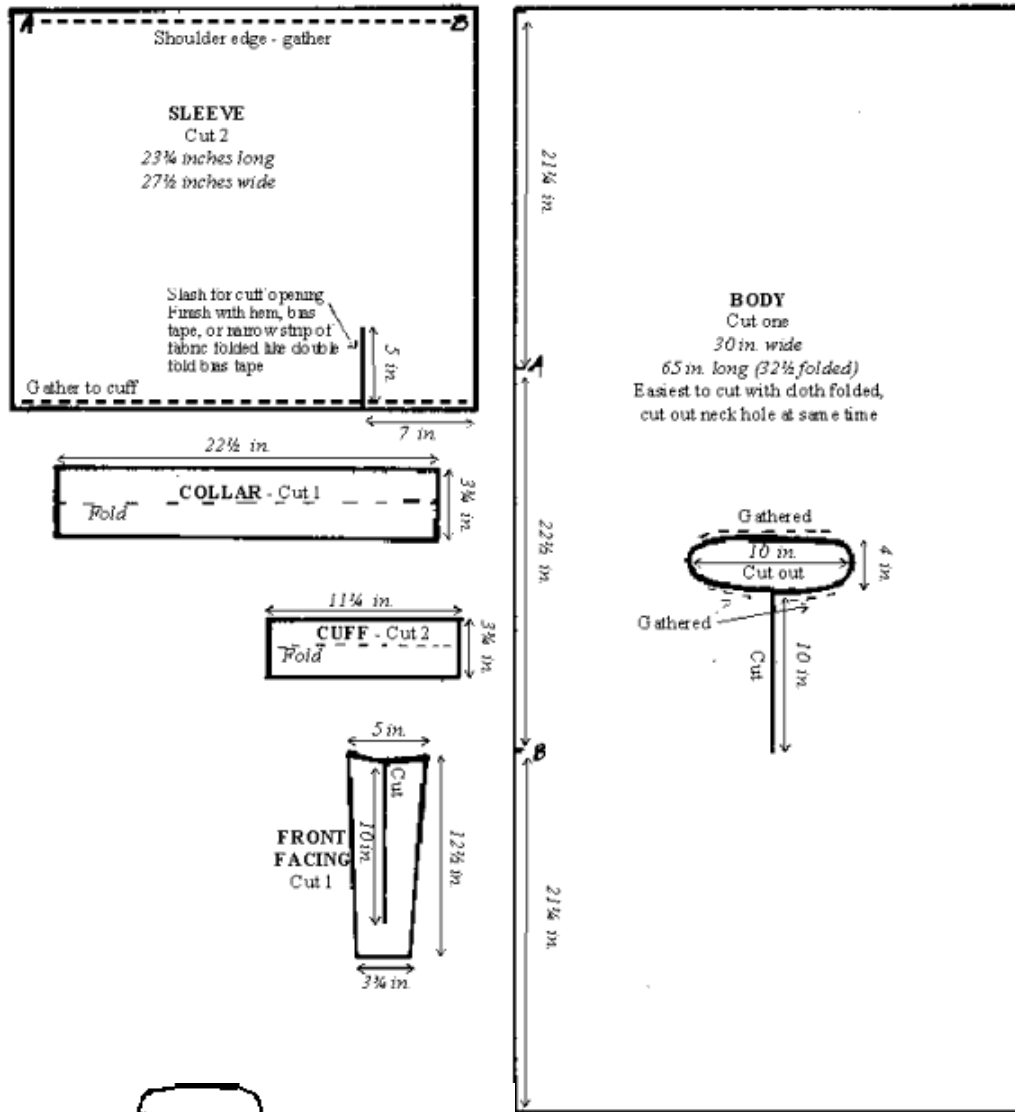


PIONEER MAN'S WORK SHIRT



Typical work shirt circa 1800-1860.
Often made of red wool flannel, white or striped cotton, and white linen.

If you sew, you shouldn't have any trouble with this. If you don't, find someone who does—writing sewing instructions is beyond my poor skills.

Close neck with buttons and loops (four, spaced about 3 inches apart) or make holes about the same distance apart on each side and lace with cord, leather, etc.

Gathered in
back

